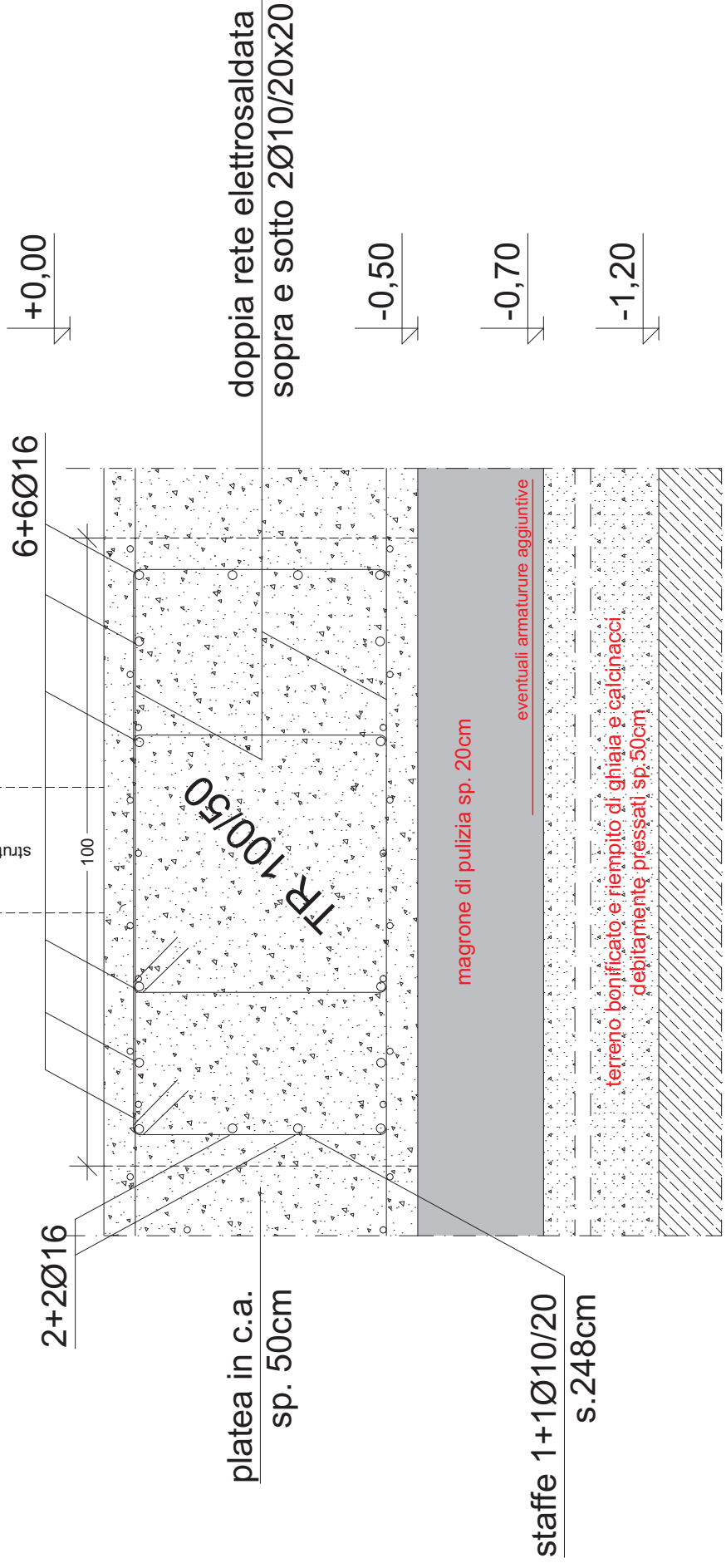




# dettaglio PLATEA - TR 100/50

T

struttura in elevazione



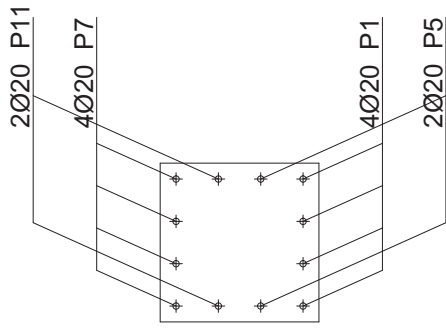
doppia rete elettrosaldata  
sopra e sotto 2Ø10/20x20

platea in c.a.  
sp. 50cm

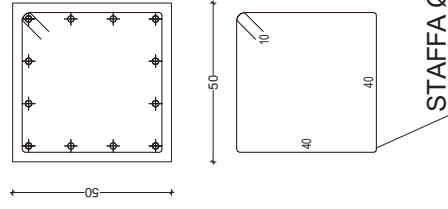
staffe 1+1Ø10/20  
s.248cm

## SEZIONE 4 T 50/50

ARMATURE CORRENTI



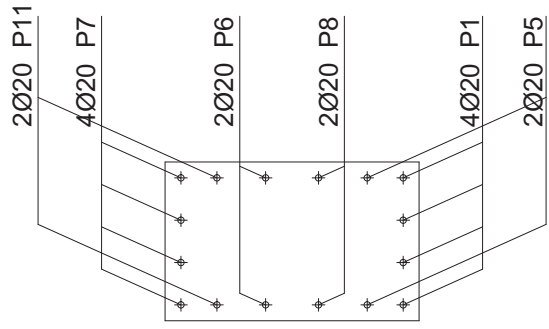
ARMATURE TRASVERSALI



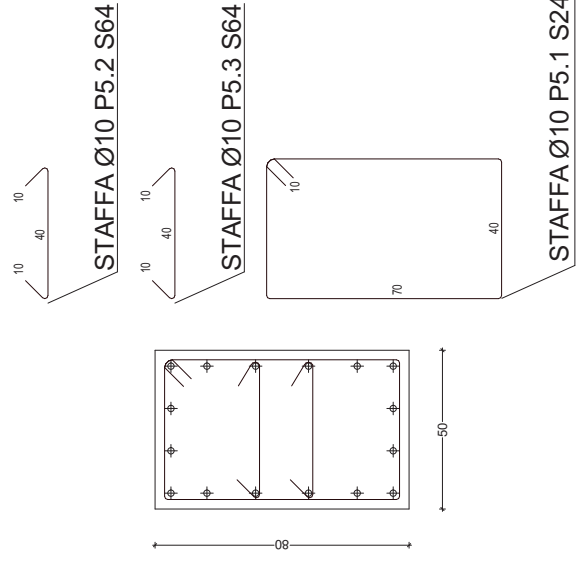
STAFFA Ø10 P4.1 S180

## SEZIONE 5 T 50/50

ARMATURE CORRENTI



ARMATURE TRASVERSALI



STAFFA Ø10 P5.2 S64

STAFFA Ø10 P5.3 S64

STAFFA Ø10 P5.1 S240